



MORGAN ASSOCIATES

ESTATE & LETTINGS AGENCY



Ground Floor Flat, 9, Suffolk Square,  
Cheltenham GL50 2DR  
£1,395 PCM



1



1



1



D

## Ground Floor Flat, 9, Suffolk Square, Cheltenham GL50 2DR

Located in one of Cheltenham's most distinguished Regency squares, this impeccably presented apartment offers a seamless blend of classic architecture and contemporary style.

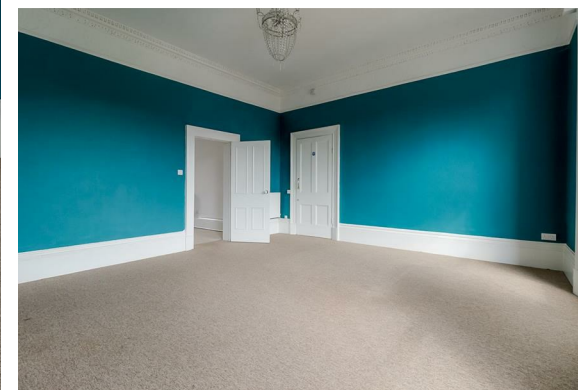
Set on the raised ground floor of an elegant period building, the property features a spacious reception room, a particularly generous double bedroom, and a smartly finished kitchen and bathroom. High ceilings and tall sash windows flood the interior with natural light, while original details add character and charm.

The flat is in excellent decorative order throughout, offering a turnkey home for a professional tenant or couple seeking refined living in the heart of Cheltenham.

Outside, there is the considerable benefit of off-street parking for one vehicle – a valuable asset in this prime location. Tenants also enjoy access to a private rear garden, ideal for a quiet morning coffee or evening unwind.

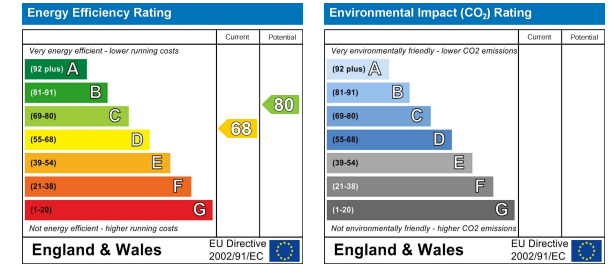
Suffolk Square is widely regarded for its peaceful setting and proximity to Montpellier's restaurants, boutiques and green spaces. Excellent transport links and local amenities are all within easy reach.

This is a rare opportunity to secure a property in one of Cheltenham's most sought-after addresses. Early viewing is recommended.



## Floor Plan

## Energy Efficiency Graph



## Area Map



## Viewing

Please contact us on 01242 514 285 if you wish to arrange a viewing appointment for this property or require further information.

Rotunda Buildings Montpellier Exchange  
Cheltenham  
Gloucestershire  
GL50 1SJ

T. 01242 514 285

E. [info@morgan-associates.co.uk](mailto:info@morgan-associates.co.uk)

W. [www.morgan-associates.co.uk](http://www.morgan-associates.co.uk)

These particulars, whilst believed to be accurate are set out as a general outline only for guidance and do not constitute any part of an offer or contract. Intending purchasers should not rely on them as statements of representation of fact, but must satisfy themselves by inspection or otherwise as to their accuracy. No person in this firm's employment has the authority to make or give any representation or warranty in respect of the property.

